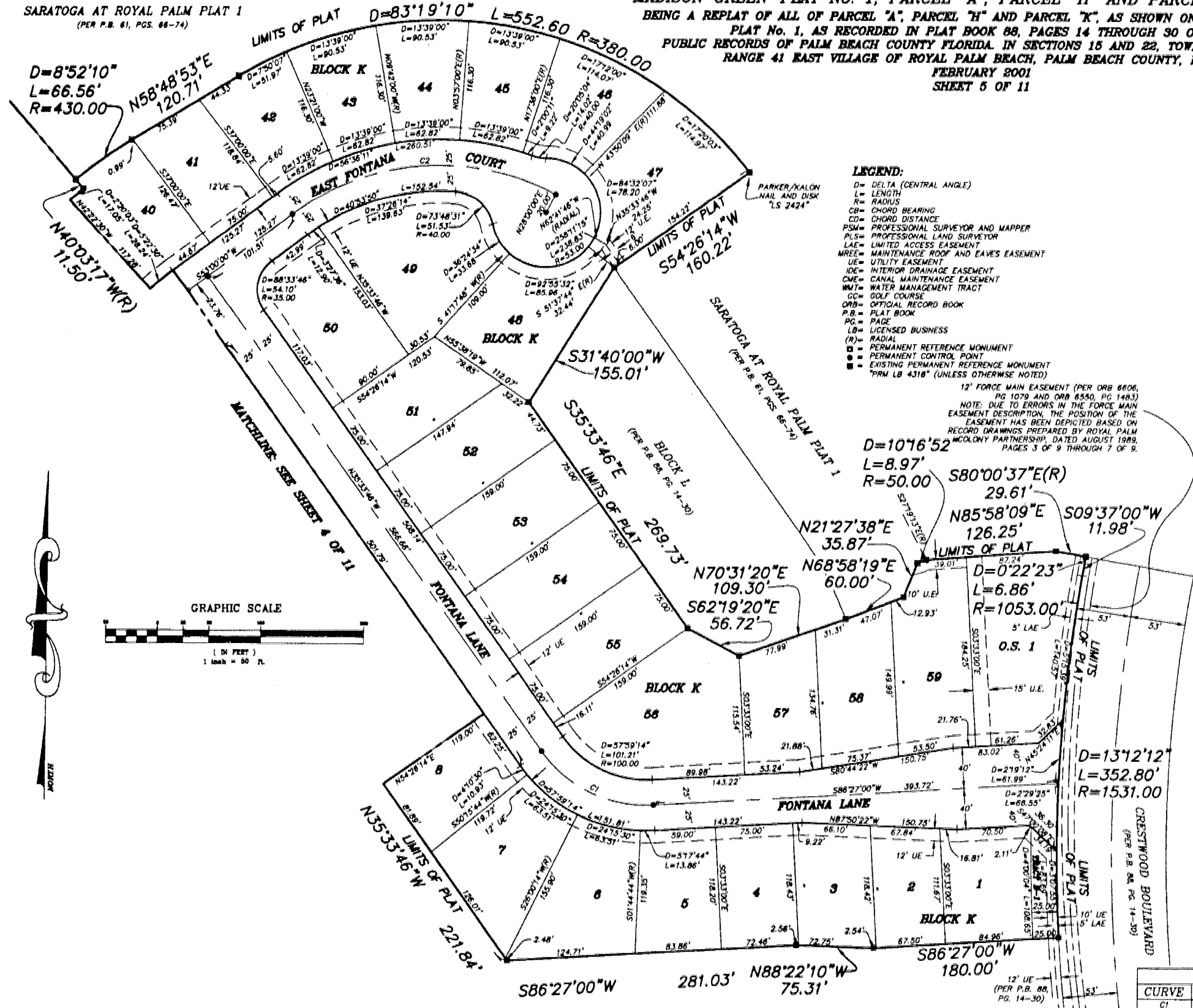


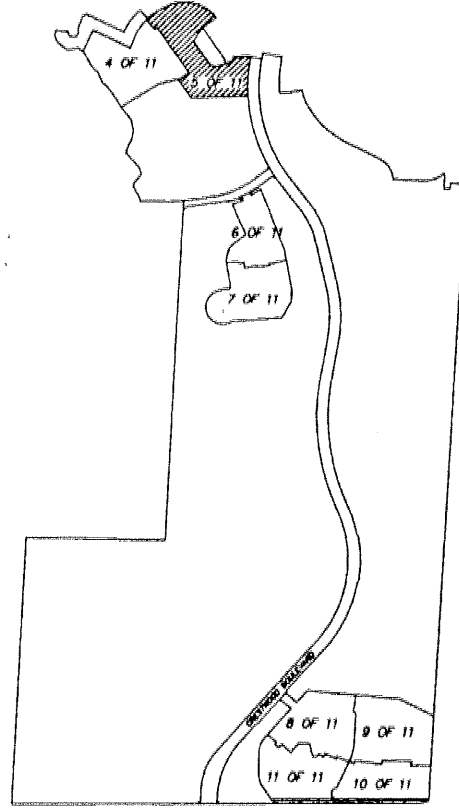
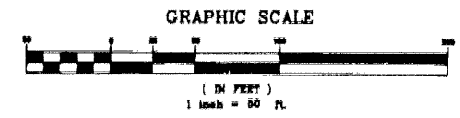
SARATOGA AT ROYAL PALM PLAT 1
(PER P.B. 81, PGS. 66-74)

MADISON GREEN-PLAT No. 1, PARCEL "A", PARCEL "H" AND PARCEL "K", REPLAT
BEING A REPLAT OF ALL OF PARCEL "A", PARCEL "H" AND PARCEL "K", AS SHOWN ON MADISON GREEN -
PLAT No. 1, AS RECORDED IN PLAT BOOK 88, PAGES 14 THROUGH 30 OF THE
PUBLIC RECORDS OF PALM BEACH COUNTY FLORIDA. IN SECTIONS 15 AND 22, TOWNSHIP 43 SOUTH,
RANGE 41 EAST VILLAGE OF ROYAL PALM BEACH, PALM BEACH COUNTY, FLORIDA
FEBRUARY 2001
SHEET 5 OF 11



- LEGEND:**
- D= DELTA (CENTRAL ANGLE)
 - L= LENGTH
 - R= RADIUS
 - CB= CHORD BEARING
 - CD= CHORD DISTANCE
 - PSM= PROFESSIONAL SURVEYOR AND MAPPER
 - PLS= PROFESSIONAL LAND SURVEYOR
 - LAE= LIMITED ACCESS EASEMENT
 - MREE= MAINTENANCE ROOF AND EAVES EASEMENT
 - UE= UTILITY EASEMENT
 - IDE= INTERIOR DRAINAGE EASEMENT
 - CME= CANAL MAINTENANCE EASEMENT
 - WMT= WATER MANAGEMENT TRACT
 - GC= GOLF COURSE
 - ORB= OFFICIAL RECORD BOOK
 - P.B.= PLAT BOOK
 - PG.= PAGE
 - LB= LICENSED BUSINESS
 - (R)= RADIAL
 - PM= PERMANENT REFERENCE MONUMENT
 - PC= PERMANENT CONTROL POINT
 - PRM= EXISTING PERMANENT REFERENCE MONUMENT
 - *PRM LB 4318* (UNLESS OTHERWISE NOTED)

12' FORCE MAIN EASEMENT (PER ORB 6606, PG 1079 AND ORB 6550, PG 1483)
NOTE: DUE TO ERRORS IN THE FORCE MAIN EASEMENT DESCRIPTION, THE POSITION OF THE EASEMENT HAS BEEN DEPICTED BASED ON RECORD DRAWINGS PREPARED BY ROYAL PALM COLONY PARTNERSHIP, DATED AUGUST 1989, PAGES 3 OF 9 THROUGH 7 OF 9.



SHEET INDEX
NOT TO SCALE

CURVE TABLE					
CURVE	DELTA	LENGTH	RADIUS	CHORD BEARING	CHORD DISTANCE
C1	57°59'14"	126.51	125.00'	S84°33'23"E	121.18
C2	65°00'00"	270.80	238.70'	S85°00'00"W	256.51

MADISON GREEN-PLAT No.1, PARCEL "A", PARCEL "H" AND PARCEL "K", REPLAT

NICK MILLER, INC.
Surveying & Mapping Consultants

SHEET NO. **5** SCALE: 1"=50'

DATE: FEB 2000
JOB NO. 99043AK
FILE: 99043AKS-5

5116 N. U.S. 1
SUITE 105
2560 RGA BLVD.
PALM BEACH GARDENS, FLORIDA 33410
TEL 561 627-5200 FAX 561 627-0983
D.B.P.R. LICENSED BUSINESS No. 4318

PARCEL J
(PER P.B. 88, PG. 14-30)